

PARKING
 EXISTING - 615
 PROPOSED - 837
 INCREASE - 222



GO POCKET TRACK
 (12 CAR CONSIST.)
 MAINLINE 1
 MAINLINE 2
 MAINLINE 3

TO UNION STATION →

GO TRANSIT PROJECT NO. RQQ-2008-EN-006

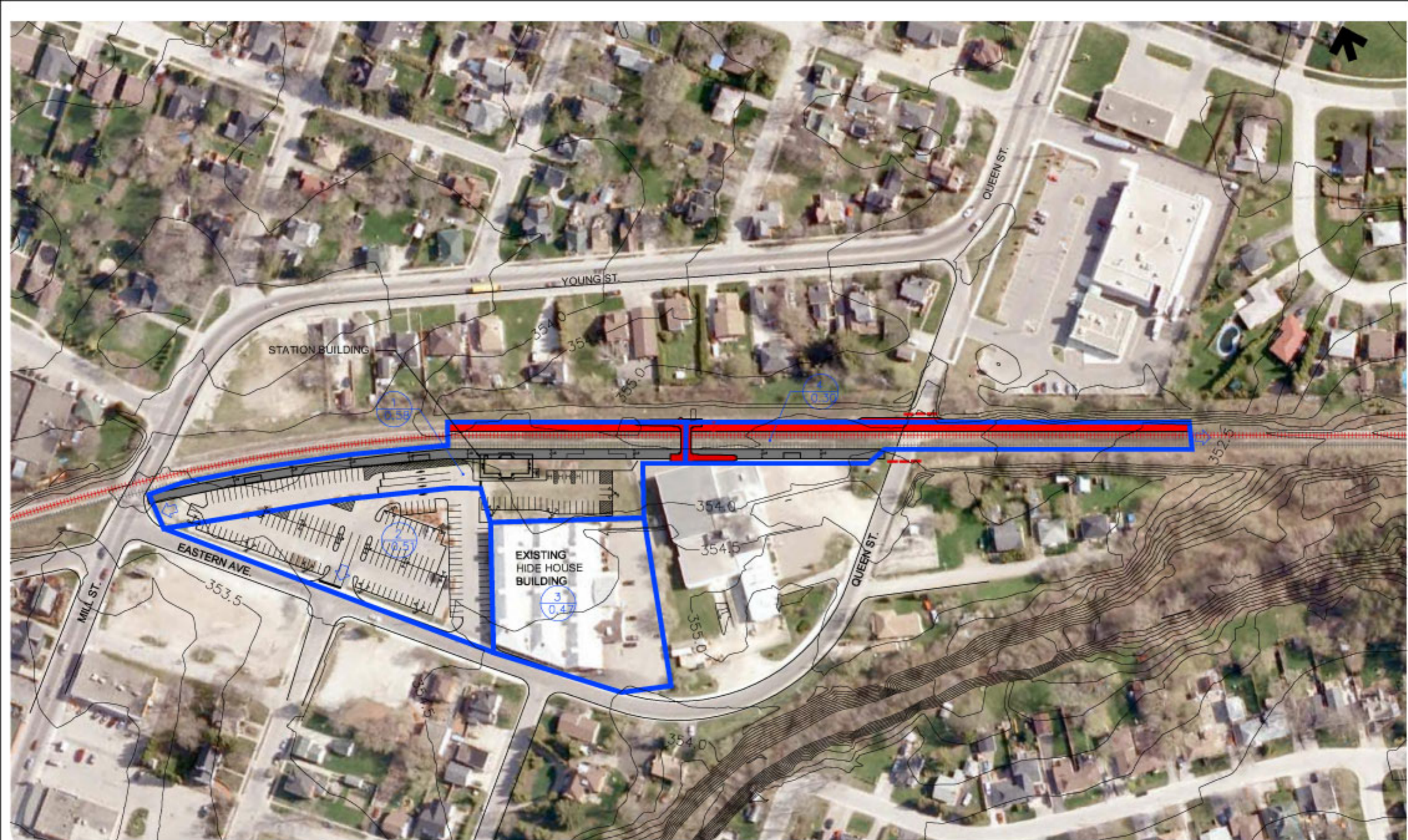


LEGEND
 CATCHMENT NUMBER
 CATCHMENT AREA
 OVERLAND FLOW ROUTE

SCALE
 0 5 10 20 25
 H. SCALE 1:1000
 DATE
 APRIL 2009

GEORGETOWN TO KITCHENER RAIL EXPANSION
 STORM DRAINAGE CONCEPTS
 GEORGETOWN GO STATION - PHASE 2 CONCEPT - HALTON SUB. MI. 23.5

FIGURE
DR-1



GO TRANSIT PROJECT NO. RQQ-2008-EN-006

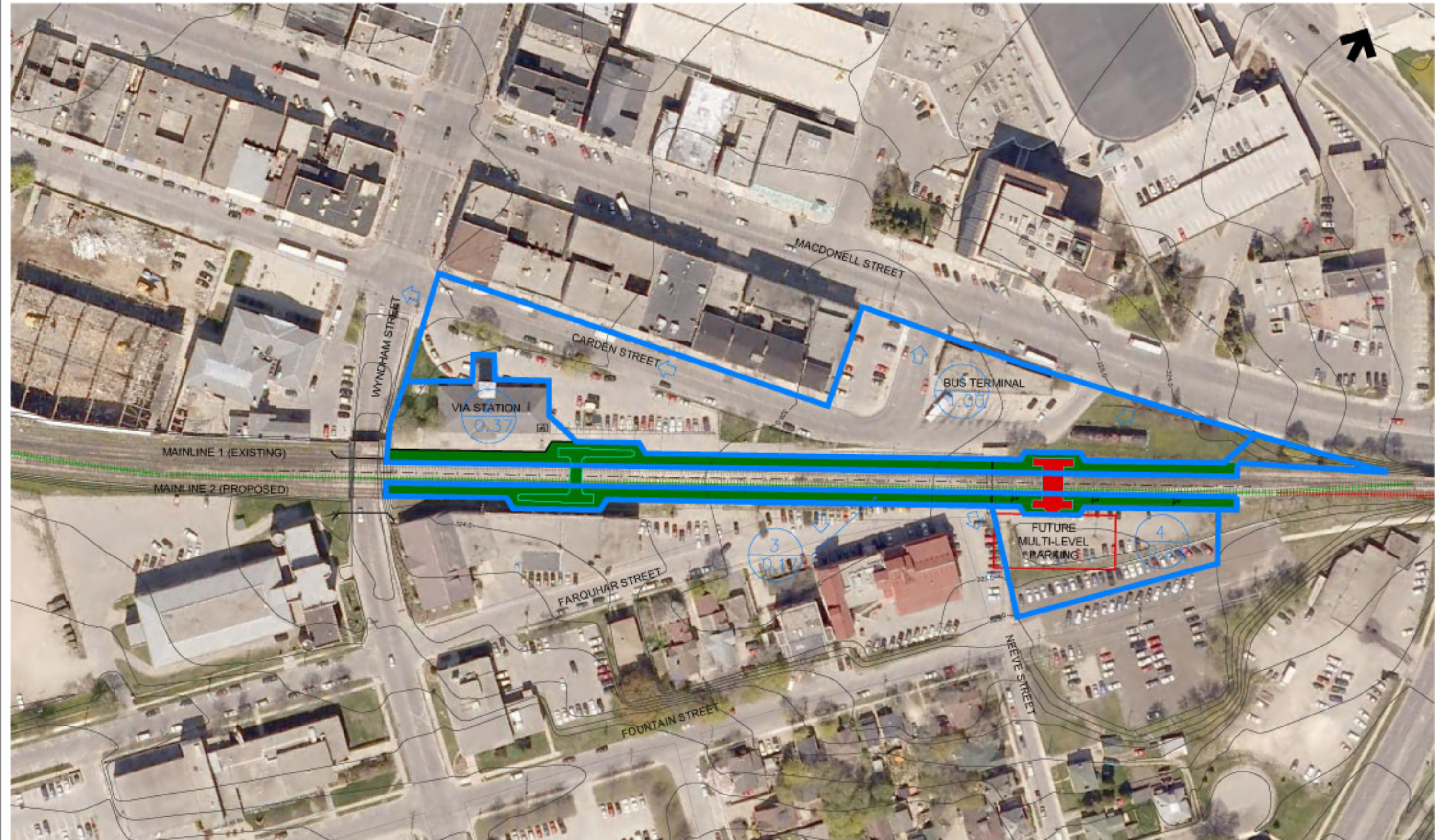


LEGEND:
 1
 0.47
 CATCHMENT NUMBER
 CATCHMENT AREA
 OVERLAND FLOW ROUTE

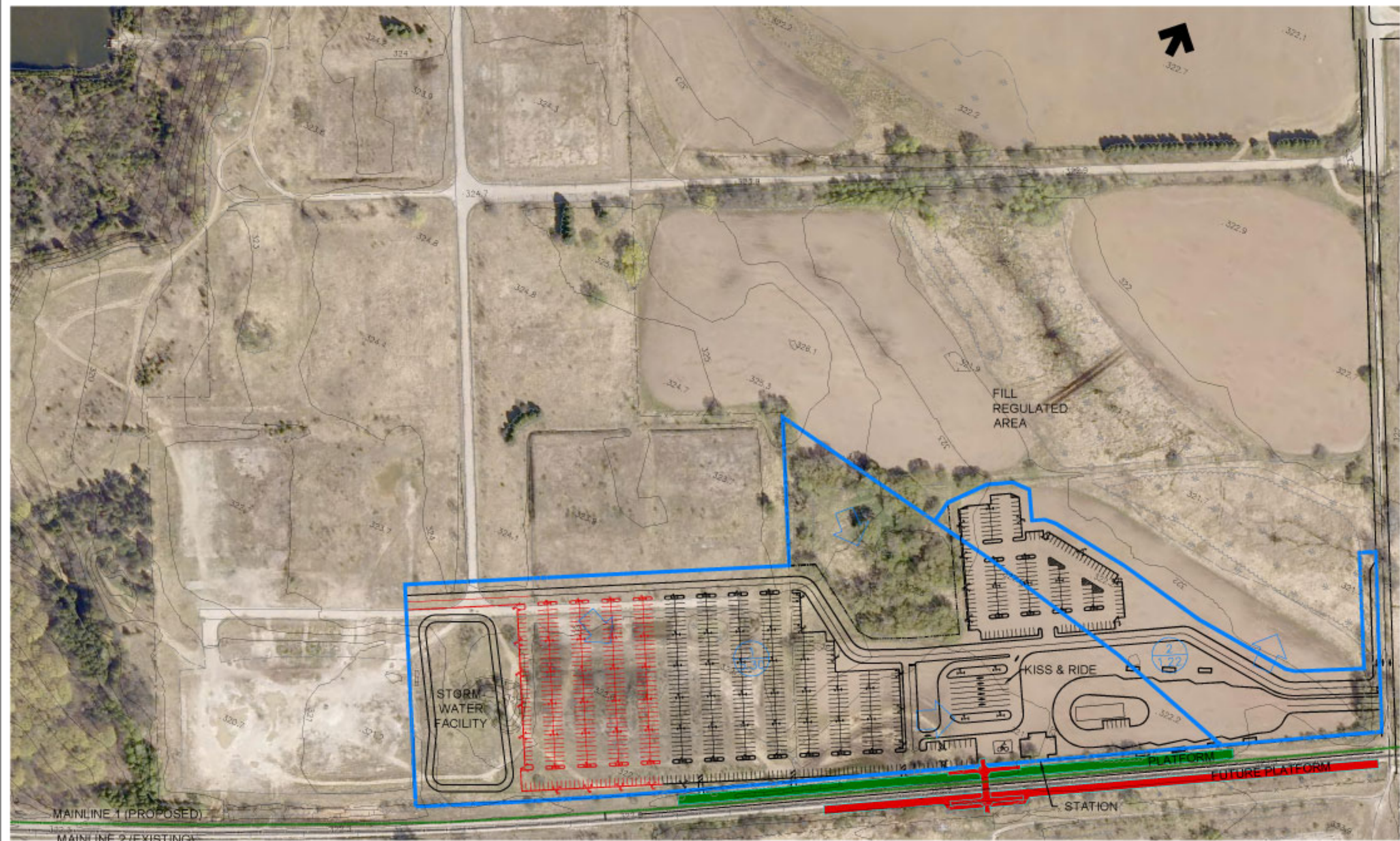
SCALE
 0 10 20 30 40 50
 M SCALE 1:500
 DATE
 APRIL 2009

GEORGETOWN TO KITCHENER RAIL EXPANSION
 STORM DRAINAGE CONCEPTS
 STORM DRAINAGE CONCEPT- ACTON - HIDE HOUSE - GUELPH SUB. MI. 35.6

FIGURE
 DR2



GO TRANSIT PROJECT NO. RQG-2008-EN-006



MAINLINE 1 (PROPOSED)
 MAINLINE 2 (EXISTING)

GO TRANSIT PROJECT NO. RQG-2008-EN-006



LEGEND:

	CATCHMENT NUMBER
	CATCHMENT AREA
	OVERLAND FLOW ROUTE

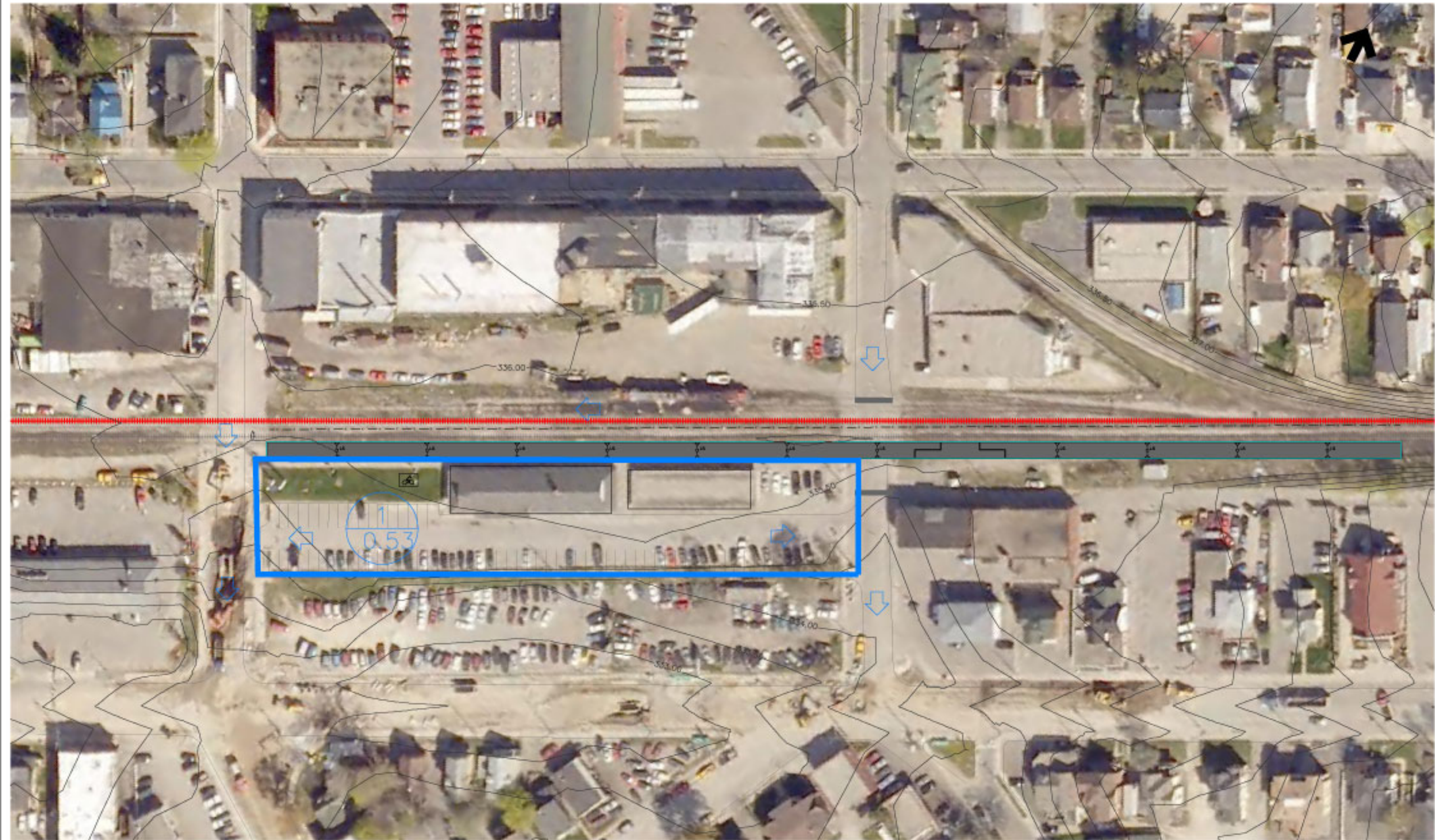
SCALE:

H. SCALE 1:200

DATE:
 APRIL 2009

GEORGETOWN TO KITCHENER RAIL EXPANSION
STORM DRAINAGE CONCEPT
 STORM DRAINAGE CONCEPT - BRESLAU - GREENHOUSE RD - GUELPH SUB. MI. 57.3

FIGURE
DR4



GO TRANSIT PROJECT NO. RQG-2008-EN-006

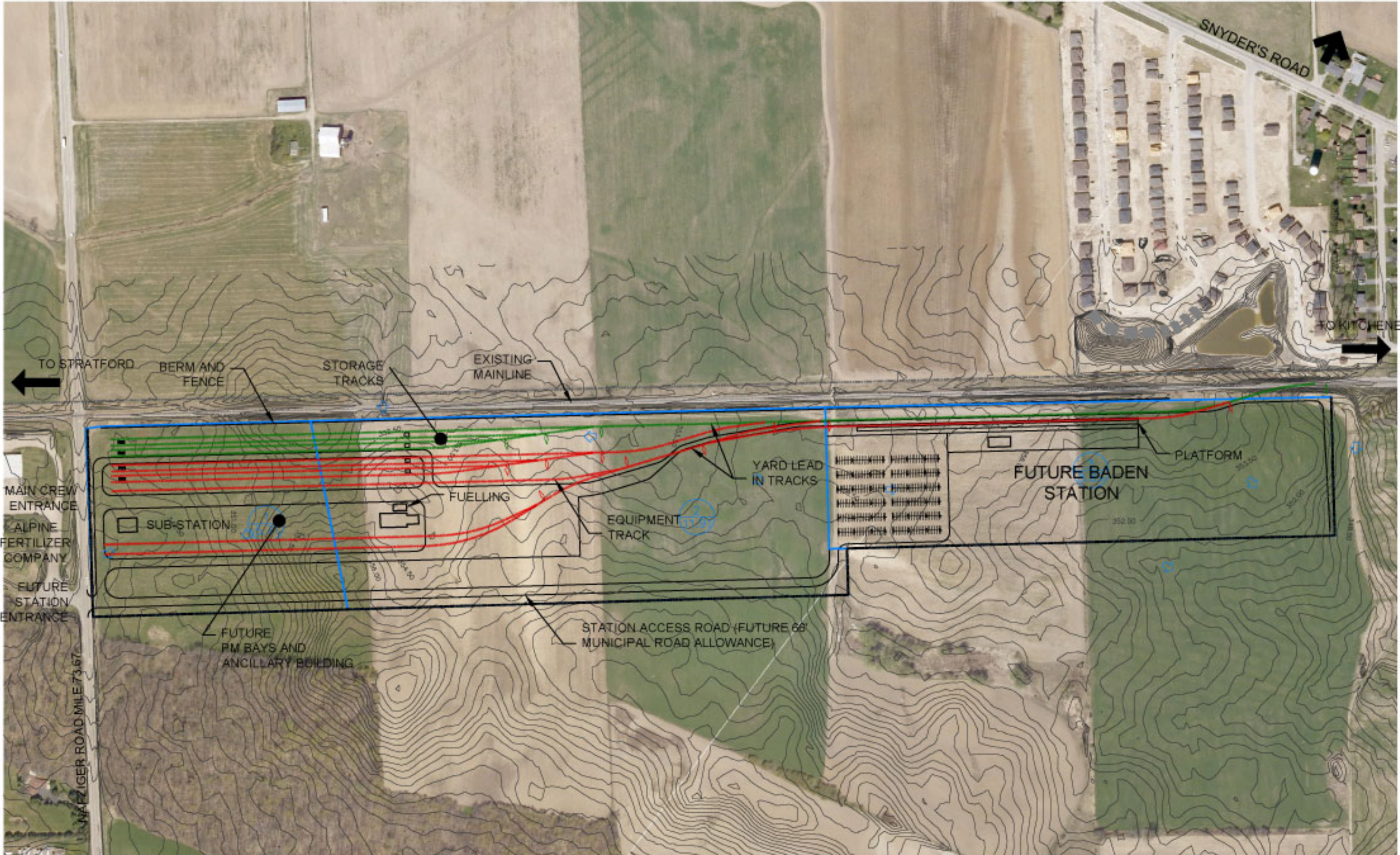


LEGEND:	
	CATCHMENT NUMBER CATCHMENT AREA
	OVERLAND FLOW ROUTE

SCALE: H. SCALE 1" = 60'
DATE: APRIL 2009

GEORGETOWN TO KITCHENER RAIL EXPANSION
STORM DRAINAGE CONCEPT
 INTERIM STORM DRAINAGE CONCEPT - KITCHENER VIA - GUELPH SUB. MI. 62.7

FIGURE
DR5



GO TRANSIT PROJECT NO. RQG-2008-EN-006